

Central Otago Trade-Ready Accommodation





Choose Responsible Tourism

By booking;

- **Boutique Lodges**
- **Independent Hotels**
- **Apartments**
- **Farm Cottages**
- **PurePods**

**Our community thanks you
for making a
sustainable choice**



Harvest Hotel, Cromwell

Central Otago's gateway Hotel, Restaurant, Bar, Café, Group Dining and Conference Centre. Parklike grounds, free parking, bordering Cromwell Golf Course with bike hire depot on-site. Directly opposite Cromwell Mall for retail, cafés, restaurants, museum and Wooing Tree Winery's new Tasting Room. Cromwell Heritage Precinct, Lake Dunstan Cycle & Walking Trail, Highlands Motorsport Park, Orchard tours and 50 vineyard cellar doors all close by.
47 rooms / 141 guests / Qualmark 3Star Plus Silver – Independent Hotel

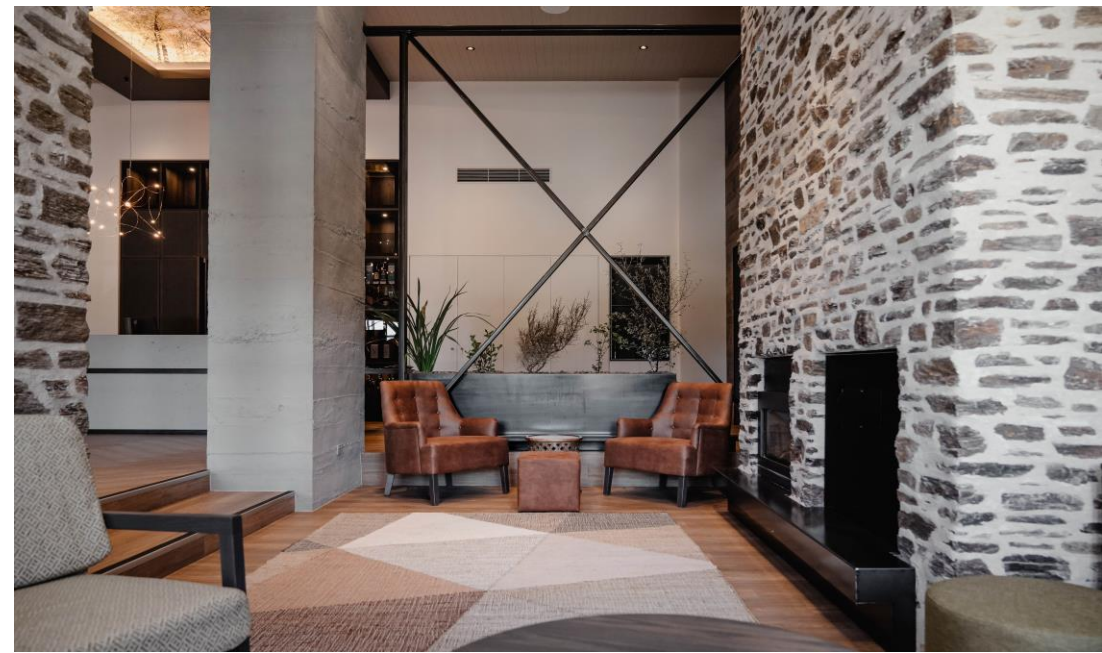
Harvest Hotel

Contact: Tia Gable

E. tia@thegate.nz

P. +64 3 445 1777 (NZ Freephone; 0800 104451)

Rates from NZD220



Central Park Apartments, Cromwell

A range of accommodation available at this managed property. Studios with kitchenette or full kitchens in 2-bed/2-bath or 3-bed/2-bath apartments. Ideal for small tour groups and conference groups. Suit self-drive FITs. Central courtyard for guests. Short drive/walk/cycle to Cromwell Mall and Lake Dunstan Trail with museums, galleries, Heritage Precinct, cafés plus over 50 winery tasting rooms and Highlands for family-fun and thrills.
46 rooms / 149 guests / Qualmark 4 Star Plus Silver - Apartments

Central Park Apartments

Contact: Marg & Doug Hay

E. info@centralparkapartments.co.nz

P. +64 3 445 3510

Rates from NZD200



PurePods Central Otago, Bannockburn

Private, secluded, uninterrupted views on a high-country station. Experience pure unfiltered nature in the beautiful landscape of Central Otago. Choice of two Pods positioned to capture stunning vistas Tāima (300m) or Haurapa (800m) away from secure parking. Dinner & breakfast hamper available on a pre-order basis

2 Pods / max. 2 guests per pod / Qualmark Gold

PurePods

Contact: Holly Regnault, Marketing Manager

E. holly.regnault@purepods.com

P. +64 21 323 658

Rates from NZD690 per pod



Carrick Vineyard, Bannockburn

Two houses ideal for families or groups of friends. Set on Carrick's organic vineyards, both houses are within meandering distance to the winery for tastings, lunch at the restaurant, or relax on the lawn with pizza. Stunning views, easy access to Lake Dunstan Trail. Cromwell Heritage Precinct with galleries, cafés and Bannockburn cellar doors/tasting rooms close by

Towan House suits 12 guests | Arthur's House suits 6 guests

Carrick Winery - Accommodation

E. experience@carrick.co.nz

P. +64 3 445 3480

'Whole of House' bookings only

Rates from NZD500 to NZD1200 per night



Marsden Lake Resort, Cromwell

Boatshed themed apartments and studios on a marina. The Moorings Restaurant & Bar on-site. FITs, Groups and Conferences. 55min drive to Queenstown or Wanaka. Heart of Central Otago wine region with numerous cellar doors. Orchard Tours. Lake Dunstan Cycle Trail. Horse-trekking. Highlands Motorsport. Museums & galleries and heritage precinct
60 rooms / 140 guests / Qualmarked 4 Star Bronze - Apartments

Marsden Lake Resort

Contact: Omar Lopez

E. stay@lakeresort.co.nz

P. +64 3 445 1777

Rates from NZD250



Dunstan House, Clyde

Restored Historic Hotel (built 1898) in Clyde. Boutique B&B and licensed café. 11 period-themed rooms, 8 ensuited, 3 with share bathrooms. Private guest lounge and verandah for evening drinks. Explore local galleries and colonial museum, visit fine homeware stores, private cinema, near to horsetrekking, golf course, 4-Wheel drive tours and tasting rooms plus all 4 of great Cycle Trails
11 rooms / 26 guests / Qualmark 4 Star Silver - Bed & Breakfast

Dunstan House

Contact: Ian & Meredith Kerrisk

E. info@dunstanhouse.co.nz

P. +64 3 449 2295

Rates from NZD150



Olivers Central Otago Lodge & Stables, Clyde

Olivers Lodge and Stables offers two distinctive styles of Bed & Breakfast accommodation in the heart of Clyde. Five (5) Stables rooms overlook a landscaped courtyard with a rustic ambience reminiscent of pioneering days. Six (6) Lodge rooms showcase elegant contemporary interiors. Freshly baked, hot breakfast served daily in the guest dining room. Café, Deli, Brewery, Bar & fine dining restaurant on-site.

11 rooms / 22 guests / Boutique B&B Lodge

Olivers Central Otago Lodge & Stables

Contact: David Ritchie

E. enquiries@oliverscentralotago.co.nz

P. +64 3 449 2600

Rates from NZD256



The Lord Clyde, Clyde

Beautifully restored historic hotel offering sophisticated luxury accommodation within its 120 year old stone walls. Nine (9) ensuite bedrooms blend elegant interiors with style and comfort. A freshly baked breakfast each morning. Enjoy a local wine in the private garden overlooking the Clutha River. Or relax by the fire in the invitingly warm and comfortable guest lounge. Explore local galleries, colonial museum, homeware stores, private cinema, dine at cafés, restaurants and enjoy the wine, cycle & walking trails nearby.

9 rooms / 18 guests / Boutique B&B Lodge

The Lord Clyde

Contact: Victoria Hansen

E. enquiries@thelordclyde.co.nz

P. +64 3 9767 909

Rates from NZD256



Monte Christo Winery Cottages, Clyde

Luxury 2-night stay in self-contained cottages on Monte Christo's vineyard estate, the Birthplace of Otago Wine (1864). Onsite e-chargers for vehicles and bikes. Immerse yourself in the rich history of Feraud's original winery, enjoy access to park-like grounds alongside the vineyard, enjoy a private tasting and welcome platter. Breakfast available (pre-order). Clyde township close by as are walking and cycle trails, golf course, horsetrekking, galleries, museums and more.

3 cottages / from 2 guests up to a max of 4 guests per cottage / Qualmark

Monte Christo Winery - Cottages

E. hello@montechristowinery.co.nz

P. +64 3 664 6644

Rates from NZD245 per cottage



Pitches Store, Ophir

Historic town of Ophir is where Pitches Store turns on the charm of yesteryear with all the comforts desired – accommodation, fine food and wine. Romantic getaways or for those seeking fine lodgings along the Rail Trail. Rooms are ensuited, with a balance of rich history and modern features. Daytime Café, Restaurant by night with guest breakfast room. Outdoor spa for guests to relax and watch day turn to night

6 rooms / 12 guests / Qualmark 4.5 Star Plus Silver Hotel

Pitches Store

Contact: Colleen Hurd

E. stay@pitches-store.co.nz

P. +64 3 447 3240

Rates from NZD300 per room



Waipiata Country Hotel, Māniatoto

Quintessentially historic hotel (1899 mud brick built for the gentry). Guests enjoy a refurbished private accommodation zone with guest lounge and internal access to tavern and restaurant. Relax, converse, explore, re-energise and imbibe. Locals' welcome visitors as long-lost family. Country vistas, big day to night skies and close to the Rail Trail (see photo of cyclists flocking in for a flavoursome lunch – 'word of mouth' patrons)

6 rooms / 12 guests / Qualmark 3.5 Star - Bed & Breakfast

Waipiata Country Hotel

Contact: Mark & Nikki Button

E. enquiries@waipiatahotel.co.nz

P. +64 3 444 9470

Rates from NZD70



Wedderburn Cottages, Māniatoto

Stay on a high-country station in cottages each with rural vistas. Rural hospitality at its best offering peace and solitude with incredible night skies. Otago Central Rail Trail cyclists or self-drive FITs or small Groups love staying in this photographer's paradise. 9-hole golf course on-site and tavern serving delicious homestyle hearty meals at the end of the driveway

14 cottages / 28+ guests / Qualmark 3 Star Plus Bronze - Cottages

Wedderburn Cottages

Contact: Lorraine Duncan

E. enquiries@wedderburn.net.nz

P. +64 3 444 9194 or 027 268 9494

Rates from NZD200 per room

